



MEDICAL SYSTEMS, INC.

7111 W Edgerton Ave | Greenfield WI 53220
800.261.FAST (3278) | MedicalSystemsUSA.com

newsletter

August 2020 | Issue 5

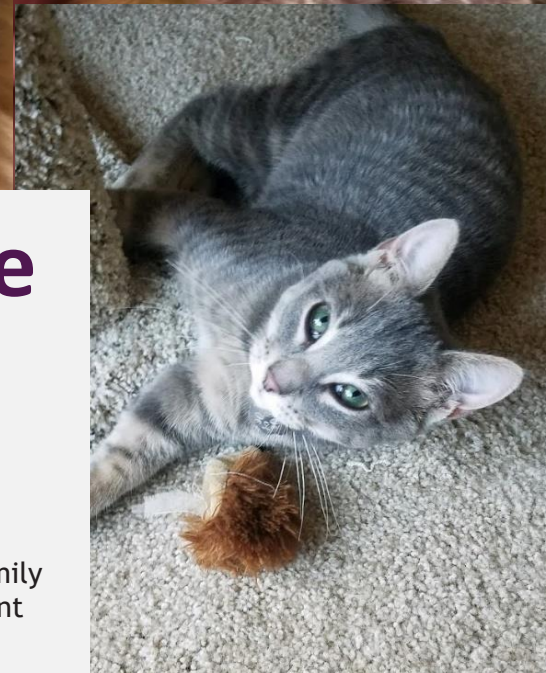
An Update on Our Services

Back to School season always brings a hustle and bustle of new routines that are being set for the upcoming year. This year that change in pace can still be felt even if it may look a little different for some with virtual or hybrid learning and mask mandates.

At MSI, most of the doctors with whom we work have returned to scheduling IMEs, and many are taking safety precautions, such as, Health Questionnaires to be completed a few days prior to an exam and masks/gloves requirement for the examination to take place. Some “higher risk” doctors are opting to only complete Records Reviews at this time.

While we at MSI are mostly working remotely, we are still available and ready to assist you. Our team has continued providing excellent service the past few months and can address any urgent needs you may have; you can expect the same level of exceptional service you have come to know and trust!

Please don't hesitate to reach out if there is anything we can do to help keep your cases on track or if you have any questions!



MSI's Rescue Pets: Max and Pooch!

This month we are featuring furry family members from our Scheduling Assistant Diana's family.

MSI continues to highlight our team member's rescue pets! Most of our staff has a furry family member adopted through a local shelter, and we are highlighting one of them and the organization that brought them home to us each issue, to raise awareness and support for these organizations. They are still providing love and exceptional care during the current circumstances, so please check them out if you are considering adding a 4 legged friend to your family!

While former stray cat Max is busy getting caught in the blinds and knocking over cups in the living room, kitten Pooch establishes his domain in the bathroom by shredding a roll of toilet paper across the floor. At 17 pounds with the nickname of Sassy Cat, 7-year-old Max thinks he should be in charge, but little Pooch isn't letting a bigger cat tame his rambunctious ways.

Everyday continues in this manner until it is bedtime, and then it is an all out battle between them! They both find common ground in eating Brussels sprouts and snuggling up on pillows.



Your MSI Team

After obtaining a degree in theater, our Account Executive Keri spent many years as a manager, primarily in the restaurant industry, honing her customer service, training, and marketing skills. She brings this problem-solving and forward-looking experience to MSI where she loves working with our clients and doctors to craft thoughtful solutions to our clients' needs. She prides herself in building real relationships with the clients and doctors with which she works and providing a personal touch whenever possible. Keri coaches our Scheduling team to provide the best customer service in addition to being proactive and to pushing themselves outside of their comfort zones. She finds her work most satisfying when our team is able to bring all the moving pieces of a complicated case together for our clients. She loves a good challenge!

When Keri is not working at MSI, she spends time hiking, biking, and cooking with her husband, two daughters, and dog. In addition, Keri looks forward to getting back into the theater at some point in the future and is one of the best and funniest storytellers we know.

Doctor Highlight

Christopher Long, MD

Board Certified in Otolaryngology,
American Board of Otolaryngology

Dr. Christopher Long is in active practice in the Department of Otolaryngology and Communication Sciences at the Medical college of Wisconsin where his special interest include hearing loss; ear diseases; speech and swallowing disorders; nasal & sinus disease & surgery; facial trauma, head & neck cancer, neck masses, tonsil & adenoid disease. He is available for IMEs in the Milwaukee area.

Dr. Long was born in Alameda, California and obtained his undergraduate degree at the University of California, San Diego. He earned his MD at the Medical College of Wisconsin, Milwaukee and completed his residency in Otolaryngology - Head & Neck Surgery at the Medical College of Wisconsin Affiliated

Hospitals in Milwaukee. He has completed several fellowships and has been on numerous medical missions to the Philippines.

Dr. Long is a member of the Medical Advisory Committee, Associated Surgical and Medical Specialists and the Operations Committee, Associated Surgical and Medical Specialists for the Surgery Center, LLC in Franklin, WI.

Dr. Long conducts Worker's Compensation and Personal Injury Record Reviews and IMEs for Medical Systems.

Click [here](#) to schedule with Dr. Christopher Long. Or call 800-261-3278.



MEDICAL SYSTEMS, INC.
independent medical evaluation services

